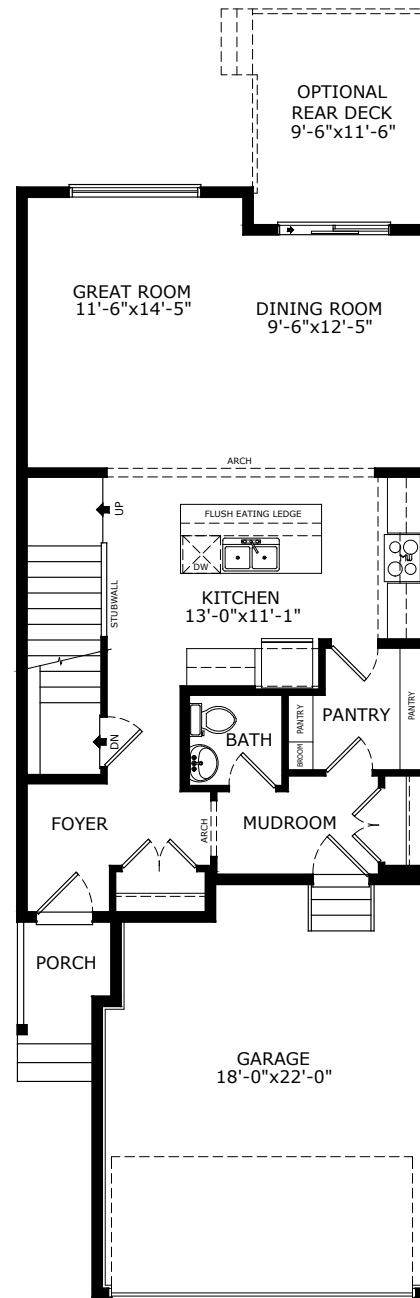
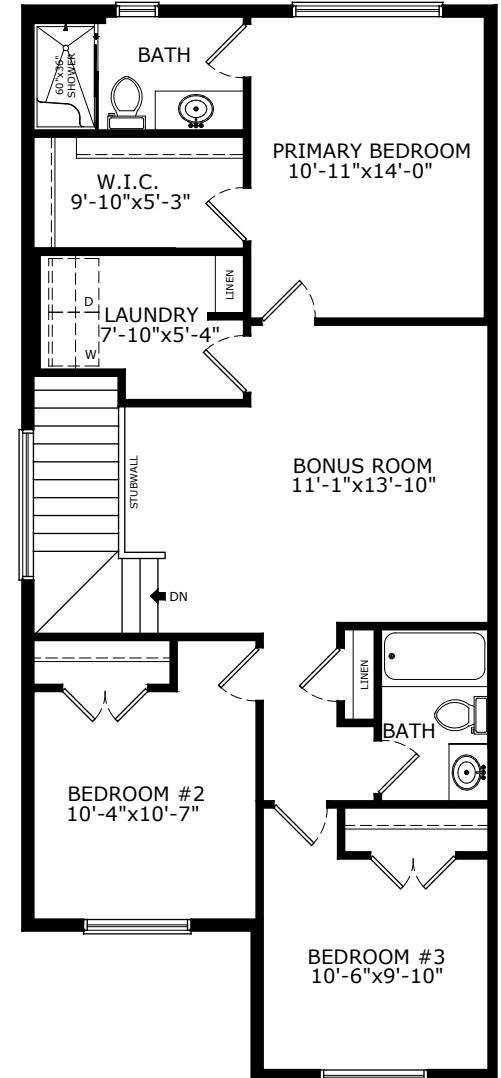


1789 SQ FT
3 BEDS
2.5 BATHS

HOGAN 4



MAIN: 816 SQ FT



UPPER: 973 SQ FT

Sterling HOMES

A QUALICO Company

ELEVATIONS



CRAFTSMAN



FARMHOUSE



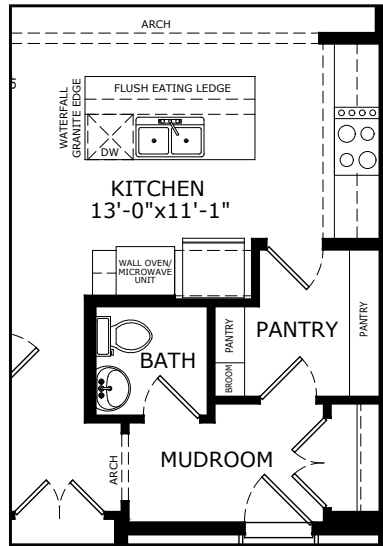
PRAIRIE



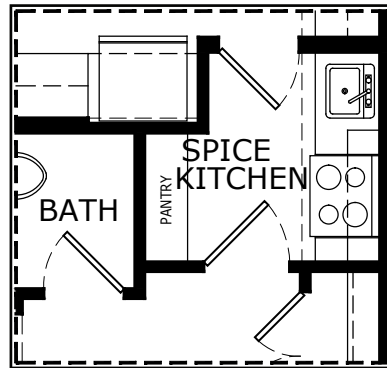
TUDOR

MAIN FLOOR OPTIONS

EXECUTIVE KITCHEN

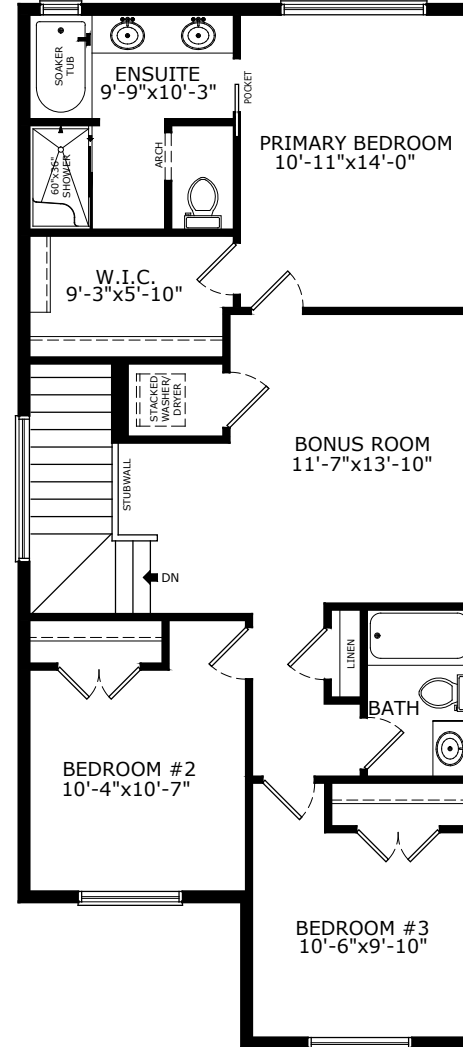


SPICE KITCHEN



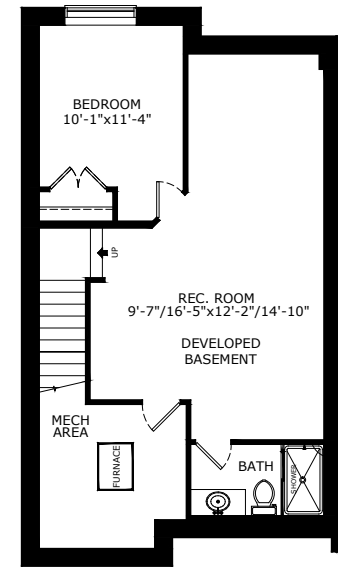
UPPER FLOOR OPTION

OPTIONAL ENSUITE

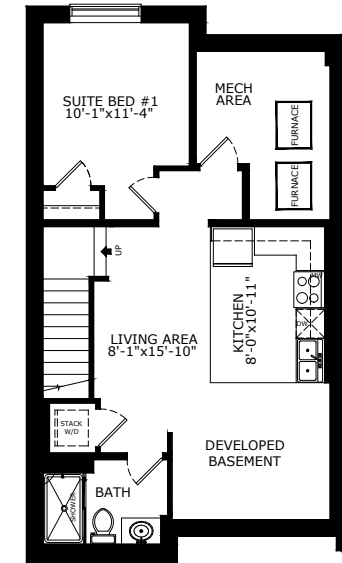


BASEMENT OPTIONS

STANDARD 586 SQ FT



1 BEDROOM 'LEGAL SUITE' 586 SQ FT



Scan here
for floorplan
options and
more

*Legal Suite availability varies by community and municipal regulations.

Build Your Life

STERLINGCALGARY.COM